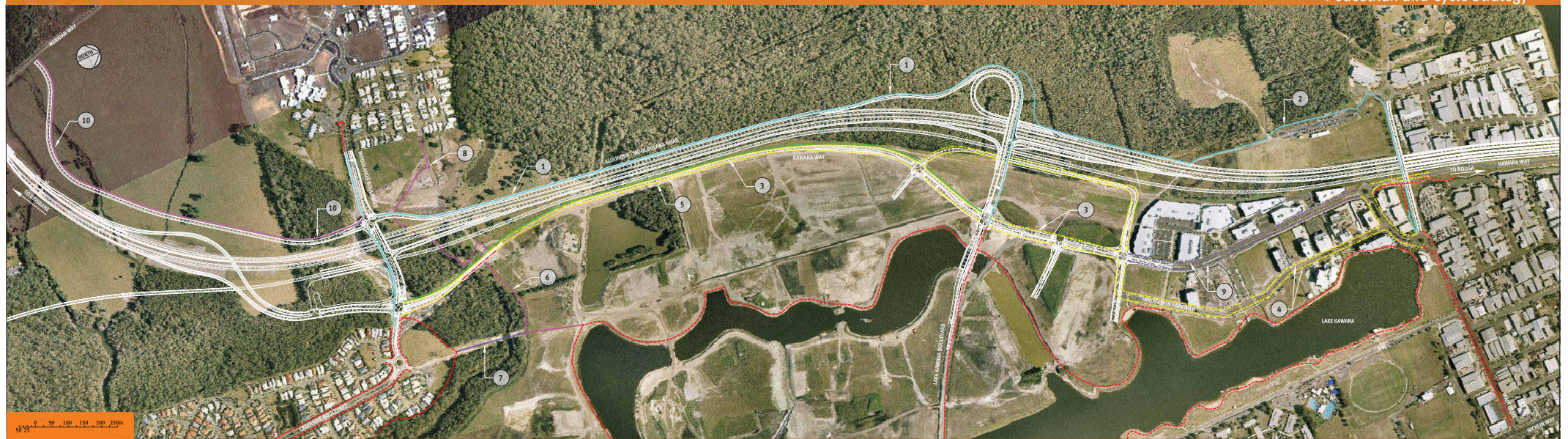


# MainRoads

Sunshine Coast Multi-Modal Transport Corridor

November 2008

## Sunset Drive to Main Drive Pedestrian and Cycle Strategy



0 50 100 150 200 250m

### LEGEND

- |   |   |  |  |  |   |
|---|---|--|--|--|---|
| <ul style="list-style-type: none"> <li><span style="color: red;">—</span> EXISTING OFF ROAD FACILITY</li> <li><span style="color: red;">—</span> EXISTING ON ROAD FACILITY</li> <li><span style="color: yellow;">—</span> PLANNED OFF ROAD FACILITY</li> <li><span style="color: yellow;">—</span> PLANNED ON ROAD FACILITY</li> <li><span style="color: green;">—</span> POSSIBLE OFF ROAD FACILITY</li> <li><span style="color: green;">—</span> POSSIBLE ON ROAD FACILITY</li> </ul> | <p>1 PLANNED OFF ROAD FACILITY (CREEKSIDE TO LAKE KAWANA BOULEVARD)<br/>- ADJACENT TO CALOUNDRA-MOOLLOOLABA ROAD</p> <p>2 PLANNED OFF ROAD FACILITY (LAKE KAWANA BOULEVARD TO MAIN DRIVE)<br/>- ADJACENT TO CALOUNDRA-MOOLLOOLABA ROAD AND MAIN DRIVE</p> | <p>3 PLANNED ON ROAD FACILITY (CURRAHURU CREEK TO INNOVATION PARKWAY)<br/>- ALONG KAWANA WAY</p> <p>4 PLANNED ON ROAD FACILITY (INNOVATION PARKWAY TO MAIN DRIVE)<br/>- ALONG INNOVATION PARKWAY</p> | <p>5 POSSIBLE OFF ROAD FACILITY (WOODLANDS BOULEVARD TO LAKE KAWANA WOODLANDS)<br/>- BETWEEN KAWANA WAY AND RAIL CORRIDOR</p> <p>6 POSSIBLE OFF ROAD FACILITY (KAWANA WAY TO LAKE KAWANA)<br/>- TO LOCAL ROADS ALONG CREEK</p> | <p>7 POSSIBLE OFF ROAD FACILITY (LAKE KAWANA TO CREEKCREED)<br/>- PEDESTRIAN AND CYCLE BRIDGE OVER CREEK</p> <p>8 POSSIBLE OFF ROAD FACILITY (KAWANA WAY AREA)<br/>- CONTINUING CREEK SIDE PATHWAYS UNDER CALOUNDRA-MOOLLOOLABA ROAD</p> | <p>9 POSSIBLE OFF ROAD FACILITY (INNOVATION PARKWAY TO MAIN DRIVE)<br/>- ALONG KAWANA WAY</p> <p>10 POSSIBLE ON ROAD FACILITY (SOUTH OF WOODLANDS BOULEVARD)<br/>- ALONG POSSIBLE FUTURE SERVICE ROAD</p> |
|---|---|--|--|--|---|